

The Art of Suspension



The Griplock Art Suspension System

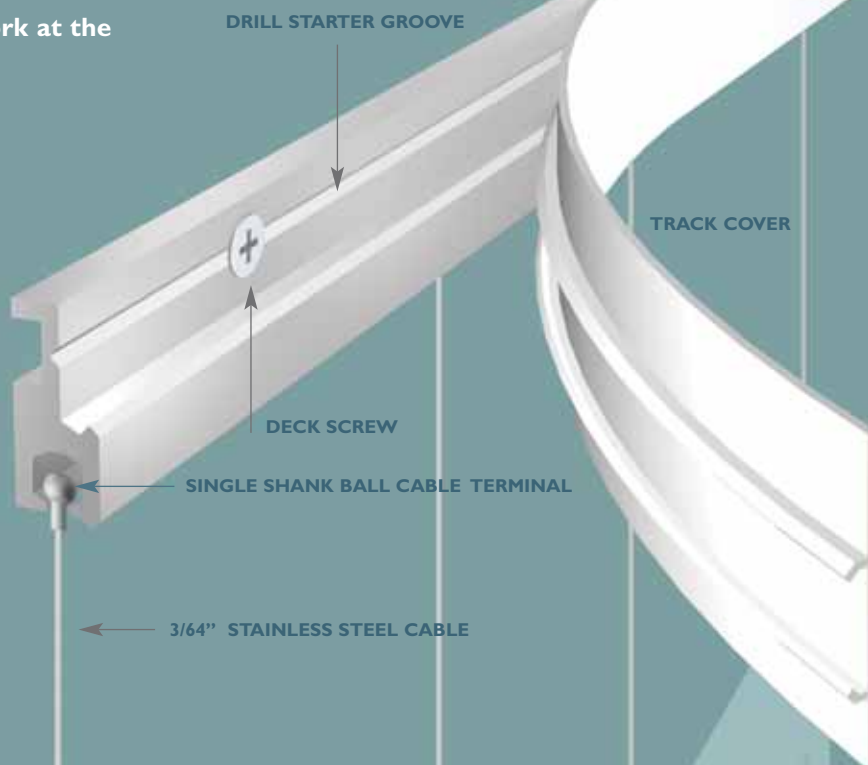
FUNCTIONAL • VERSATILE • ELEGANT

Whether you're hanging a show in SoHo, creating a window display on Fifth Avenue or suspending 3-dimensional artwork at the Getty, you can count on Griplock.

2



END CAP



DRILL STARTER GROOVE

TRACK COVER

DECK SCREW

SINGLE SHANK BALL CABLE TERMINAL

3/64" STAINLESS STEEL CABLE

Griplock Cable

The single shank ball terminal allows the Cable to slide easily to any point on the Art Track. Griplock 3/64" Stainless Steel Cable supports a maximum of 50lbs. Other Cable sizes and terminals are available.

Art Track

The extruded aluminum Art Track is 80" long and can be screwed or bolted to any solid structure at any point along its length. When securely mounted, the Track will safely hold up to 50lbs. every 16". The white PVC Track Cover slides or snaps into place and is available precut to 82".

To cover a row of end-to-end Track sections, continuous lengths up to 250' are available. The Track Cover is flexible and paintable. Cables may be added or removed via an escape hole on the underside of each Track section.

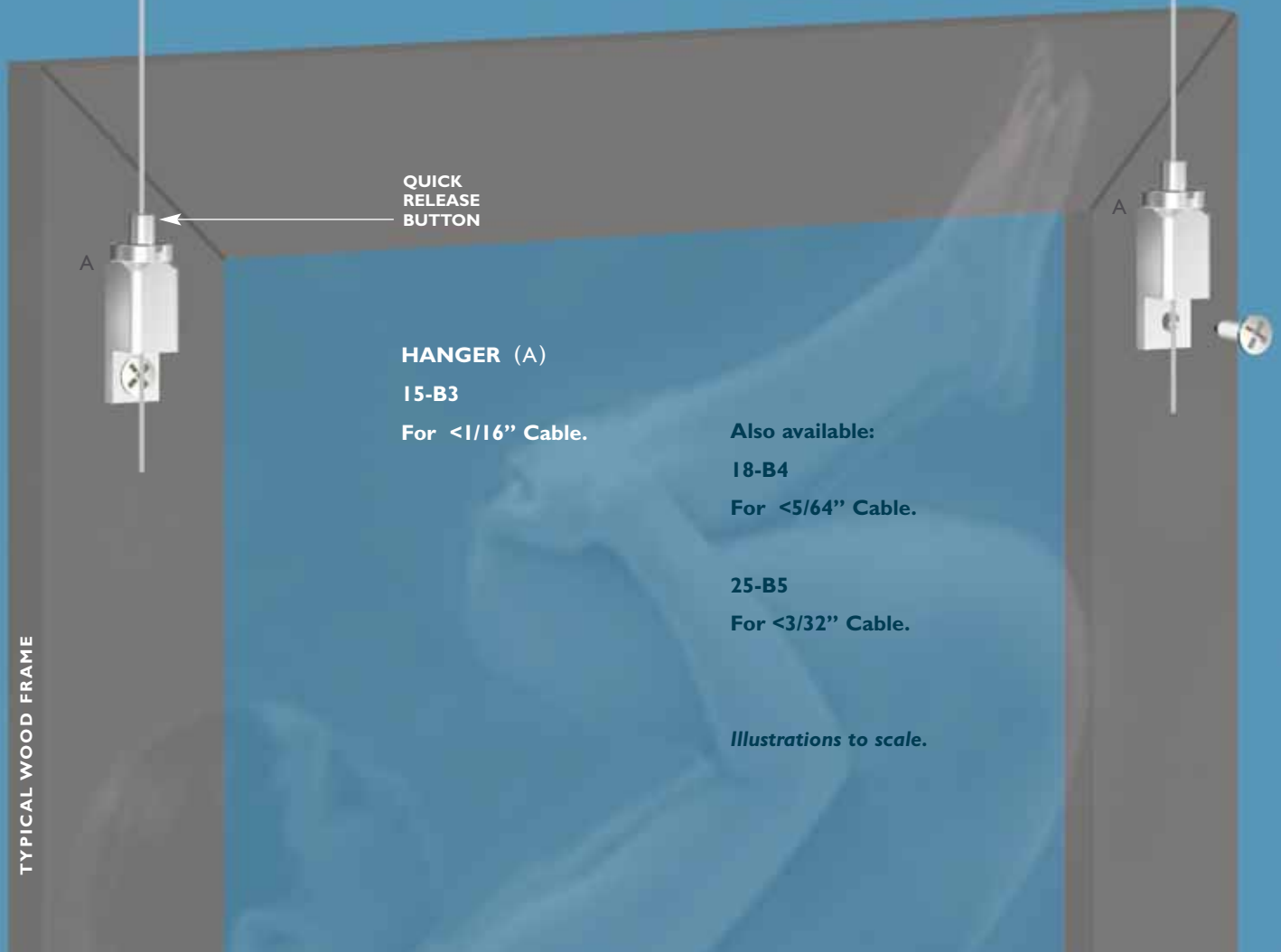
Illustrations to scale

The Griplock **Glider**

THE GREATER THE WEIGHT
THE STRONGER IT GRIPS

Gliders feature a precision-built internal mechanism that locks securely to the Cable yet can be released at the touch of a button. There are Gliders, Cable Couplers and Cables for every conceivable application.

3



TYPICAL WOOD FRAME

QUICK
RELEASE
BUTTON

A

A

HANGER (A)
15-B3
For <1/16" Cable.

Also available:
18-B4
For <5/64" Cable.

25-B5
For <3/32" Cable.

Illustrations to scale.

The Griplock Glider

OPTIONS • ALTERNATIVES • SOLUTIONS

PICTURE WIRE GLIDER (B)

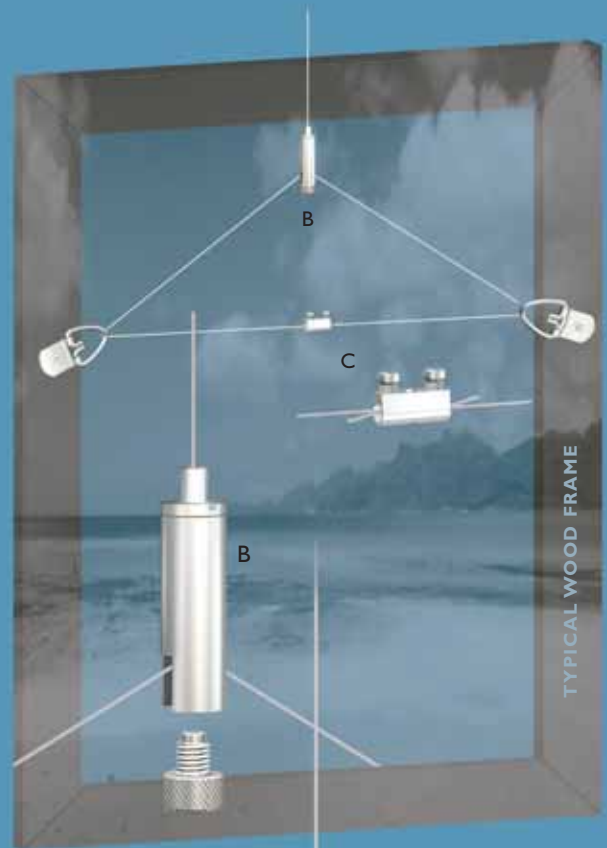
15Z-M6R-SL2.6

Thumb-screw locks to
picture wire.

Also available:

25Z-M6-SL3.0

For $<3/32$ " Cable.



CABLE COLLAR (C)

CC-Q3.2

4

TYPICAL METAL FRAME



SMALL HOOK (D)

15-HA

Also available:

18-HA

Large Hook
for $<5/64$ " Cable.

GATED HOOK (E)

15-GHA

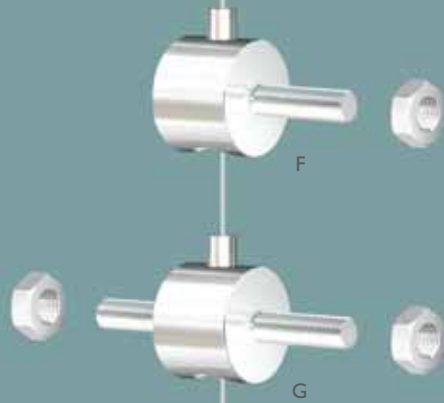
Locks securely to
picture wire, strap
hangers etc.



Illustrations to scale.

The Griplock Glider

S I M P L E • S E C U R E



HANGER (F)
15-M5-Q
M5 lock nut incl.
Bolts to displays.

DOUBLE HANGER (G)
15-M5-2Q
Two M5 lock nuts incl.
Locks displays together.

QUICKLINK (J)
Locks Ring to displays.

**FORK & LOCKING
PIN (K)**
15-FORK 6x24
Holds material
<1/4" thick.

Also available:
15-FORK 8x16
Holds material
<5/16" thick.

30-FORK 10x20
For <1/8" Cable.
Holds material
<3/8" thick.

50-FORK 14x28
For <3/16" Cable.
Holds material
<1/2" thick.

RING (H)
15-RI

Also available:
18-RI
For <5/64" Cable.

30-RI-S
For <1/8" Cable.

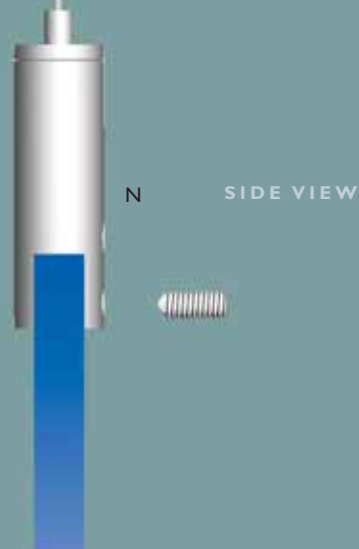
50-RI-S
For <3/16" Cable.

Illustrations to scale.



Griplock Clamps

FOR SIGNAGE & DISPLAYS



6

SIDE CLAMP (L)
15-SC-250-L / 15-SC-250-R
M4 set-screws & hex key incl.
Holds material <1/4" thick.

Also available:
15-SC-400-L / 15-SC-400-R
Holds material <13/32" thick.

GUIDE CLAMP (M)
CC-SC-250
M4 set-screws & hex key incl.
Holds material <1/4" thick.

Also available:
CC-SC-400
Holds material <13/32" thick.

TOP CLAMP (N)
15Z-TC-250
M4 set-screws & hex key incl.
Holds material <1/4" thick.

Also available:
15Z-TC-400
Holds material <13/32" thick.

Griplock Clamps are used for wall displays in conjunction with Art Track, or may be attached to Cables tensioned between stationary Cable Couplers (see p. 7). Display material can be either clamped or pinned using the M4 set-screws and hex key provided. Guide Clamps align the display to the Cable by locking to the display but sliding freely along the Cable.

Illustrations to scale.

Cable Couplers

& TENSIONING SYSTEMS

Cable Couplers create stationary attachment points on ceilings, floors and walls from which Cables can be suspended or tensioned. Tensioning from wall to wall or floor to ceiling requires a combination of adjustable and non-adjustable Couplers.

Cable Couplers have separate base-plates that can be screwed or bolted to structural surfaces. Most base-plates have 1/4-20 internal threads that can be screwed onto 1/4-20 anchors or studs – see above right.

RT-CC-M10 (O)
Non-adjustable
two-piece Coupler.

Also available:
RT-CC-M13
For <1/8" Cable.

RT-15-M10 (P)
Adjustable
two-piece Coupler.

Also available:
RT-25-M13
For <3/32" Cable.

CC-1420-SL3.0 (Q)
Non-adjustable
two-piece slotted
Coupler for angled
applications.

Also available:
CC-SL4.5
For <1/8" Cable.

I2-BS (R)
Adjustable
two-piece Coupler
for <3/64" Cable.

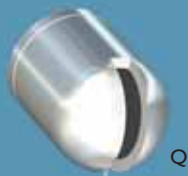
Also available:
I5-BS
For <1/16" Cable.

RT-CC-M8 (S)
Non-adjustable
two-piece Coupler.

RT-12-M8 (T)
Adjustable
two-piece Coupler
for <3/64" Cable.

CC-1420-ELP (U)
Non-adjustable
two-piece Coupler.
Base-plate shown
separated from Coupler.

I5Z-1420-ELP (V)
Adjustable
two-piece Coupler.



The Griplock Art Suspension System

SIMPLE • SECURE

Hang art safely & securely on any surface without the inconvenience of nails & picture hooks.

LEVELS ART IN SECONDS

Add, remove & reposition art quickly & easily. Hang pieces individually or stack them as shown opposite.

SOLUTIONS

Griplock Systems carries a broad selection of Cable Suspension components besides those shown or described here. Please contact us for further information on our comprehensive product line.

Griplock Systems

410 Palm Ave., Loft A-18

Carpinteria, CA 93013

Ph 800.585.1505 / 805.566.0064

Fx 805.566.0065

www.griplockart.com

art@griplocksystems.com

Cable Gliders & Couplers in this brochure work with both 3/64" & 1/16" Cable unless noted. Nuts bolts & screws shown or mentioned are included with the product. Most illustrations are to scale.

