

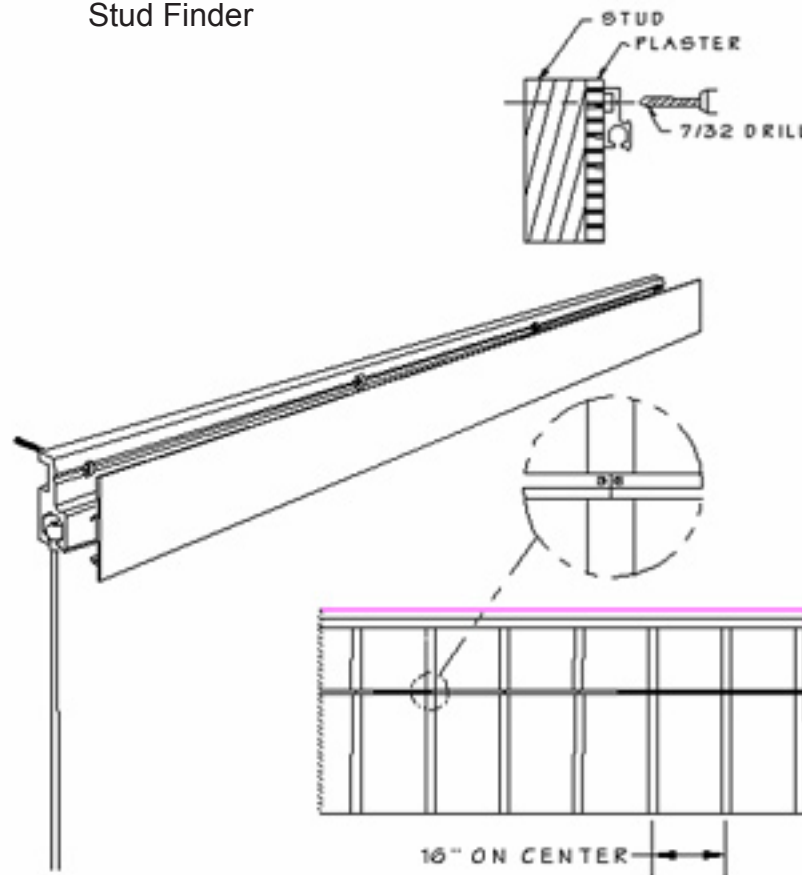
In all cases described below Griplock Systems recommends the services of a professional installer or at the very least the help/advice of someone familiar with this type of installation. Remember that this is a permanent installation. It's worth getting it right the first time!

**Tools:**

Electric Drill  
7/32" drill bit  
Chalk Line  
Tape Measure

Phillips bit #2  
Water level  
Stud Finder

We provide 7 x 2" x #8 phillips-head deck screws with ea ch 80" section of track.



The Track is designed so that the ends will coincide exactly with the wall studs as illustrated above however, we do realize that this is not always the case.

**Mounting the Track to a Stud & Plaster Wall**

The Track can be mounted at any height on the wall but is best set at the very top because there are one and sometimes two horizontal two-by-fours running the length of the wall at ceiling height and it is convenient to fasten into this part of the wall blocking (see above). The Track is aluminum and can easily be cut. A chop-saw with a fairly fine-toothed carbide blade is ideal but a good Hacksaw will work if care is taken to achieve a clean square cut. Use these tools to cut the Track Cover, too. Remove burrs from the cut ends of the track with a small metal file or wire brush. This is particularly important around the areas over which the track cover will slide.

### Mounting a Single Piece of Track

Mark the position of wall-studs along the proposed line of the Track using the stud-finder. If the Track starts in a corner, drill a hole in the Track about 3/8" from that end. There is usually a vertical wall stud in the corner (see above). Screw the Track loosely into position. Now bring the other end of the Track into place using the water level and screw it loosely into the wall stud closest to the end (If there is no wall stud at the end of the Track you may use an alternate fastener such as an EZ-Toggle). When all screws and anchors are in place, tighten down. Now either slide the Track Cover into place or, hooking the top leg of the Cover over the Track, smooth the bottom of the Cover into place with the heel of your hand. The Cover is two inches longer than the track itself so you will need to trim one end. Note: The cover is flexible and can be pulled off and replaced. If you have difficulty sliding the cover onto the Track, spray the back of the cover with a little WD40.

### Mounting a Series of Tracks End to End:

Use the chalk line to mark the wall where the lower edge of the Tracks will sit. Mark the position of wall studs along that line. If you are starting the Track from a corner, drill a hole in the Track about 3/8" from that end. There is always a vertical wall stud in the corner (see drawing above). Screw the Track loosely into position. Now bring the other end of the Track up flush with the chalk line and screw it loosely into the wall stud closest to the end. Tighten down the Track and attach it to the wall at all other attachment points. If you are using the 82" sections of Track cover, slide one on now (If you are using the one-piece continuous Cover you should wait until all the Tracks have been mounted before installing it). Notice that the individual piece of cover overlaps the Track by about 2". Peel back the cover a few inches. Use vice-grips or similar (a small section of cover will do) to clip the next part of the Track to the first part. Care should always be taken to align the two Track ends as closely as possible. Repeat the installation process described earlier in this paragraph. Note: if Track ends fall between wall studs and do not naturally align themselves, then it may be necessary to use alternative fasteners such as an EZ-Toggle to attach them to the wall. Note: If you have difficulty sliding the cover onto the Track, spray the back of the cover with a little WD40.

**General Installation Notes:** The Track is extremely strong and even if it is not attached to the wall every 16" or so it will only sag when subjected to a very heavy weight. In newer buildings plaster walls tend to be straight so the Track will conform more easily. Nevertheless, Griplock Systems recommends that the Track be fully installed with fasteners at least every 16". In older buildings where walls can undulate it may be necessary to use other types of fasteners between the studs. In modern commercial buildings steel studs are used in place of wooden ones. It may be necessary to pre-drill these studs. In the case of brick or concrete or other solid walls, the appropriate screws and wall anchors must be used. Griplock Systems does not provide these or any fasteners besides the included deck screws.