

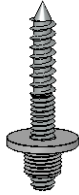
Ceiling Mounts Installation Guidelines

Wood Ceiling
Option 1



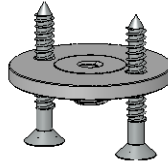
#8 or #10 Wood
Screw Into Beam

Wood Ceiling
Option 2



1/4-20 Hanger
Bolt Into Beam

Wood Ceiling
Option 3



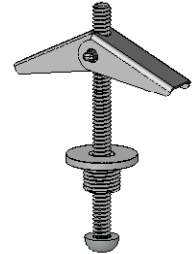
2 - #10 or #12 Wood
Screws Into Beam

Concrete Ceilings



1/4-20 Stud Into
Screw Anchor
Installed in Concrete

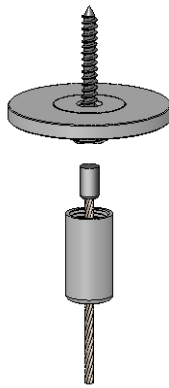
Drywall/Plaster
Ceilings



3/16" Hillman Toggle
Bolt or 1/4" Toggle
Nut w/ 1/4-20 Stud



DG-CC-SAT

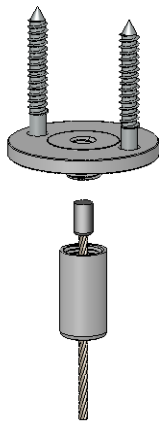


DG-CC-CPLT-SAT

1) Mount base plate by
one of the above options
listed above

2) Feed open end of
cable through coupler.

3) Screw coupler onto
base plate



DG-CC-APLT-SAT

DATE: 09/18/08

SCALE: 1:2

FILE: Ceiling Mounts Instructions

PROPRIETARY AND CONFIDENTIAL

This drawing and these specifications are the exclusive property of GRIPLOCK SYSTEMS LLC and shall not be divulged, reproduced, copied, or used as the basis for the manufacture or sale of apparatus without the express written authorization of GRIPLOCK SYSTEMS LLC.



GRIPLOCK SYSTEMS

410 Palm Ave. Loft A18, Carpinteria, CA 93013
Phone (805) 566-0064 Fax (805) 566-0065
www.griplocksistemas.com