



Shelving & Signage Systems

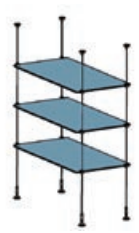
The Art of Suspension

CONTENTS

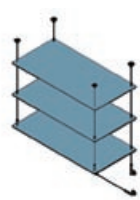
PAGES

Display Systems.....1-6
 Components.....7-14
 Index & Technical Data.....15-19

SHELVING SYSTEMS



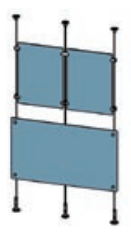
Ceiling to Floor



Ceiling to Wall

The Griplock® Display System offers a simple, highly versatile selection of ceiling to floor and wall-mounted components for most shelving and display materials, including glass, acrylic, metal, wood, foamcore and other media. The stainless steel cables are virtually invisible to the eye and the connecting hardware is elegant and minimal, enabling the designer to create display systems that appear to float in mid-air. This emphasizes the products on display rather than the shelving itself, and lends a sharp, ultra-modern ambiance to any retail environment. We've designed this attractive and affordable collection to handle a multitude of shelving and display applications, and to keep pace with the imagination of the modern retail space designer.

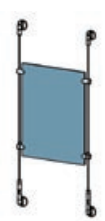
SIGNS & BANNERS



Ceiling to Floor



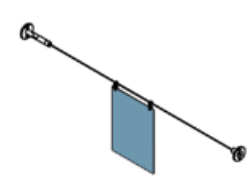
Ceiling Suspended



Wall Mounted



Stand Offs



Wall to Wall

There is no faster, neater or more economical way to hang and change banners and store signs than with aircraft cable. Our grippers, couplers, cables and connectors are designed to work with most signage applications, and can be used over and over again.

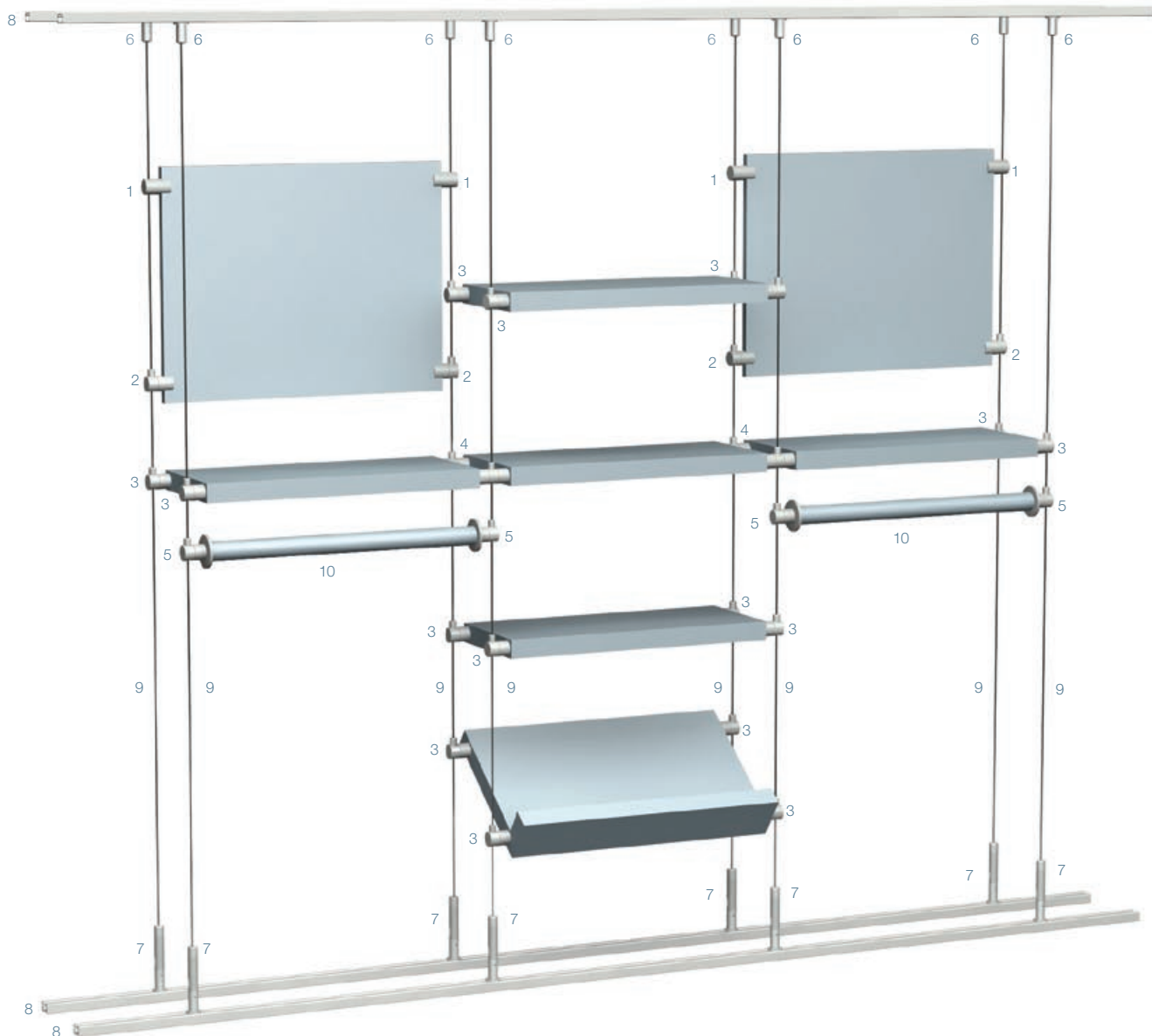
The Griplock® Display System: Elegant, Flexible and Incredibly Strong.



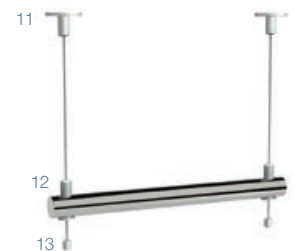
2 Displays/Shelving & Signage

TRACK MOUNTED DISPLAY

Ideal for installations where flexibility of shelving and promotional material is key. Displays can be rearranged by simply moving the cable horizontally along the tracks. Tracks can be inset into the floor and ceiling for a cleaner look. Visit our website or contact us for more information.



- | | |
|---|---|
| 1 Guide Clamp - Large / DG-GC-SAT <i>pg. 10</i> | 9 Cable w/ Barrel Terminal <i>pg. 14</i> |
| 2 Swiveling Side Clamp Gripper / DG-25-SCU-SAT <i>pg. 10</i> | 10 Garment Rod* / DG-ROD |
| 3 Swiveling Side Mount Gripper / DG-25-SMU-SAT <i>pg. 12</i> | 11 Cable Coupler w/ Cover Plate / DG-CC-CPLT-SAT <i>pg. 8</i> |
| 4 Swiveling Double Side Mount Gripper / DG-25-SMUX2-SAT <i>pg. 12</i> | 12 Support Gripper w/ Base Plate / DG-25-SAT <i>pg. 13</i> |
| 5 Rod End Mount Gripper / DG-25-ROD-END-SAT <i>pg. 12</i> | 13 Cable Finial / DG-CT-SAT <i>pg. 14</i> |
| 6 Cable Coupler w/ Base Plate / DG-CC-SAT <i>pg. 8</i> | |
| 7 Tensioning Gripper w/ Base Plate / DG-TNS-SAT <i>pg. 8</i> | |
| 8 Ceiling/Floor Track / DG-TRACK-72 <i>pg. 9</i> | |



Garment Rods

*Griplock can supply aluminum and stainless steel rods to order.

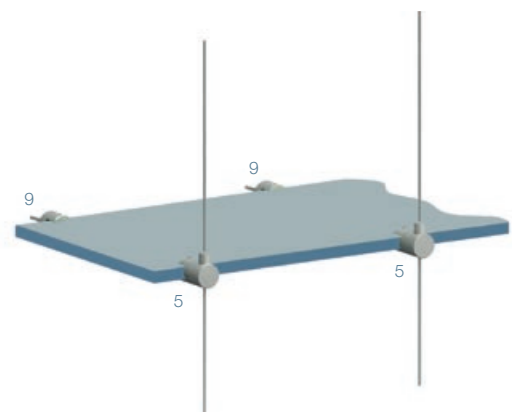
FIXED MOUNT DISPLAY

Griplock®'s ceiling to floor shelving system can be situated anywhere in a space. Its individual suspension points make it ideal for a fixed location while still allowing vertical movement of the shelving. Components are available for use with most shelving types including, metal, wood, glass and acrylic. Griplock® can supply shelving to order. Visit our website or contact us for more information.



- 1 Cable Coupler w/ Base Plate / DG-CC-SAT *pg. 8*
- 2 Support Gripper w/ Cover Plate / DG-25-CPLT-SAT *pg. 13*
- 3 Swiveling Side Mount Gripper / DG-25-SMU-SAT *pg. 12*
- 4 Swiveling Double Side Mount Gripper / DG-25-SMUX2-SAT *pg. 12*
- 5 Swiveling Side Clamp Gripper / DG-25-SCU-SAT *pg. 10*
- 6 Swiveling Double Side Clamp Gripper / DG-25-SCUX2-SAT *pg. 10*
- 7 Tensioning Gripper w/ Base Plate / DG-TNS-SAT *pg. 8*
- 8 Cable w/ Barrel Terminal / DAS-25-71-XXX *pg. 14*
- 9 Fixed Wall Clamp / DG-WSC-SAT *pg. 12*

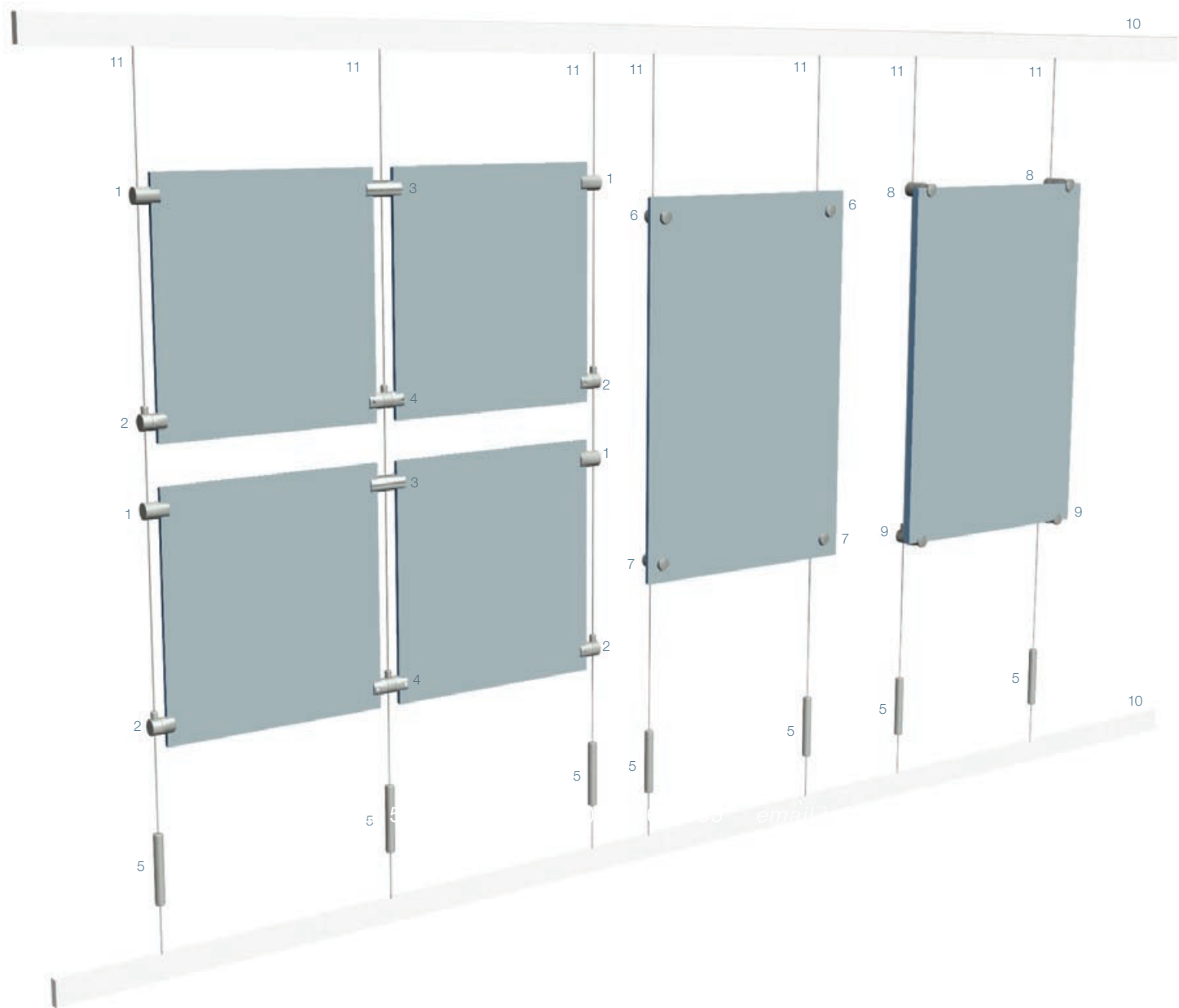
Partial Wall Mounting
Fixed Wall Clamps lock shelves to the wall while cables support them at the front.



4 Displays/Signage

WALL TRACK MOUNTED SIGNAGE

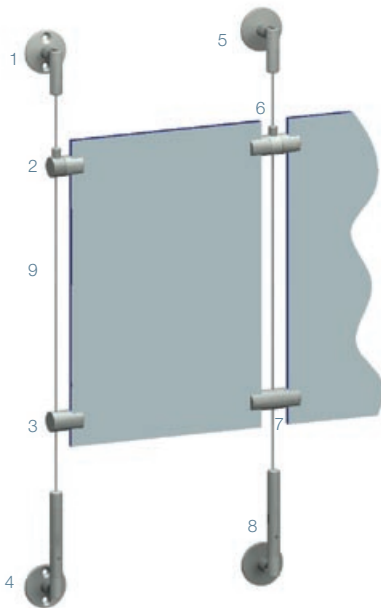
Track mounted signage options let you suspend and change signs, art, photographs and more - vertically and horizontally - without damaging your walls. Visit our website or contact us for more information.



- | | |
|---|---|
| 1 Guide Clamp - Large / DG-GC-SAT <i>pg. 10</i> | 7 Stand Off Mount Gripper / DG-25-SOM-SAT <i>pg. 11</i> |
| 2 Swiveling Side Clamp Gripper / DG-25-SCU-SAT <i>pg. 10</i> | 8 Stand Off Clamp Guide / DG-GSLU-SAT <i>pg. 11</i> |
| 3 Double Guide Clamp - Large / DG-GCX2-SAT <i>pg. 10</i> | 9 Stand Off Clamp Gripper / DG-25-SLU-SAT <i>pg. 11</i> |
| 4 Swiveling Double Side Clamp Gripper / DG-25-SCUX2-SAT <i>pg. 10</i> | 10 Wall Track / DG-WALL-TRACK-80 <i>pg. 9</i> |
| 5 Wall Track Tensioning Gripper / DG-TNS-TRACK-SAT <i>pg. 9</i> | 11 Cable w/ Barrel Terminal <i>pg. 14</i> |
| 6 Stand Off Mount Guide / DG-GSOM-SAT <i>pg. 11</i> | |

FIXED MOUNT SIGNAGE

Materials from glass to foamcore can be hung wall to wall or ceiling to floor using a combination of Griplock®'s sign hanging components. Visit our website or contact us for more information.



- 1 Jointed Coupler w/ Anchor Plate / DG-CC-JU-APLT-SAT *pg. 8*
- 2 Side Clamp Gripper - Left / DG-15-SCL-SAT *pg. 10*
- 3 Guide Clamp - Small / DG-GCK-SAT *pg. 10*
- 4 Jointed Tensioning Gripper w/ Anchor Plate / DG-TNS-JU-APLT-SAT *pg. 8*
- 5 Jointed Coupler w/ Cover Plate / DG-CC-JU-CPLT-SAT *pg. 8*
- 6 Double Side Clamp Gripper / DG-15-SCX2-SAT *pg. 10*
- 7 Double Guide Clamp - Small / DG-GCKX2-SAT *pg. 10*
- 8 Jointed Tensioning Gripper w/ Cover Plate / DG-TNS-JU-CPLT-SAT *pg. 8*
- 9 Cable w/ Barrel Terminal *pg. 14*



- 1 Fixed Stand Off Mount - Medium / DG-SO-500-SAT *pg. 12*
- 2 Fixed Stand Off Mount - Small / DG-SO-250-SAT *pg. 12*

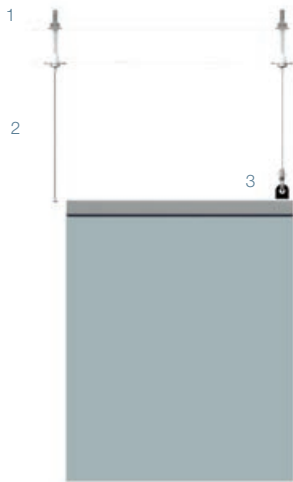


- 1 Cable Coupler w/ Cover Plate / DG-CC-CPLT-SAT *pg. 8*
- 2 Double Stand Off Mount Gripper / DG-25-SOMX2-SAT *pg. 11*
- 3 Tensioning Gripper w/ Anchor Plate / DG-TNS-APLT-SAT *pg. 8*

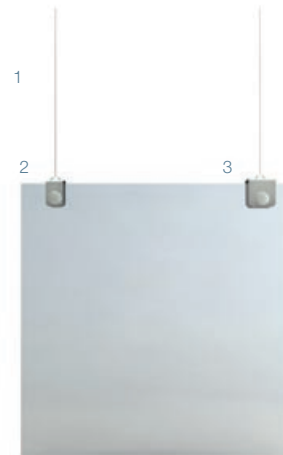
6 Displays/Signage

SIGNS & BANNERS

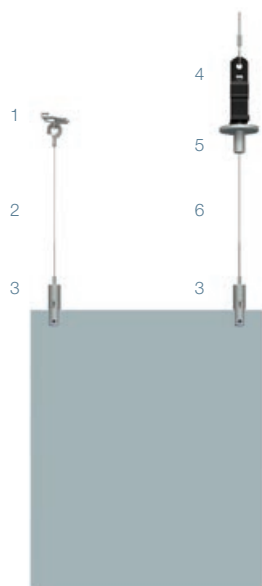
Ceiling hung signage can be elegantly suspended in a variety of configurations. Display changes are quick and easy.



- 1 Acoustic Tile/Drywall Gripper / DG-12-CPLT-SAT *pg. 9*
- 2 Cable w/ Ball Terminal 3/64" (1.2mm) / DAS-12-80-XXX *pg. 14*
- 3 Cable w/ Mini Gated Hook 3/64" (1.2mm) / DAS-12-GHKZ-XXX *pg. 14*



- 1 Cable w/ Ball Terminal 3/64" (1.2mm) / DAS-12-80-XXX *pg. 14*
- 2 Fixed Clamp - Small / DG-TC-500-SAT *pg. 13*
- 3 Fixed Clamp - Medium / DG-TC-750-SAT *pg. 13*



- 1 Twist on T-Bar Clip / DG-Q6-W *pg. 9*
- 2 Cable w/ Mini Gated Hook 3/64" (1.2mm) / DAS-12-GHKZ-XXX *pg. 14*
- 3 Top Clamp Gripper / DG-15Z-TC-300-SAT *pg. 11*
- 4 Wrap Around T-Bar Clip / DG-BA1 *pg. 9*
- 5 Cable Coupler w/ Cover Plate / DG-CC-CPLT-SAT *pg. 8*
- 6 Cable w/ Barrel Terminal 1/16" (1.6mm) / DAS-16-87-XXX *pg. 14*



- 1 Swiveling Side Mount Gripper / DG-25-SMU-SAT *pg. 12*
- 2 Cable Finial / DG-CT-SAT *pg. 14*

Griplock® can supply custom wooden dowels to order.



8 Components/Ceiling/Floor

CEILING TO FLOOR & WALL MOUNTED

Most applications are ceiling to floor, however, these tensioning systems can run from any surface to any surface at any angle. Use the jointed systems for angled applications. The terminal end of the cable is captured by the Cable Coupler at the upper end of the system and the free end is fed into the Tensioning Gripper at the lower end, which tightens the cable by means of its internal turnbuckle. The Anchor Plate is used to attach the system more securely to structure. The Cover Plate is decorative. All components can be screwed to structural surfaces, but because of their internal 1/4-20 threads, they can also be attached to pre-set threaded studs. Visit our website or contact us for more information.

Cable Coupler
w/ Base Plate
DG-CC-SAT
pgs. 2,3,6



Tensioning Gripper
w/ Base Plate
DG-TNS-SAT
pgs. 2, 3

Cable Coupler
w/ Anchor Plate
DG-CC-APLT-SAT



Tensioning Gripper
w/ Anchor Plate
DG-TNS-APLT-SAT
pg. 5

Cable Coupler
w/ Cover Plate
DG-CC-CPLT-SAT
pgs. 2,5,6



Tensioning Gripper
w/ Cover Plate
DG-TNS-CPLT-SAT

Jointed
Cable Coupler
w/ Base Plate
DG-CC-JU-SAT



Jointed
Tensioning Gripper
w/ Base Plate
DG-TNS-JU-SAT

Jointed
Cable Coupler
w/ Anchor Plate
DG-CC-JU-APLT-SAT
pg. 5



Jointed
Tensioning Gripper
w/ Anchor Plate
DG-TNS-JU-APLT-SAT
pg. 5

Jointed
Cable Coupler
w/ Cover Plate
DG-CC-JU-CPLT-SAT
pg. 5



Jointed
Tensioning Gripper
w/ Cover Plate
DG-TNS-JU-CPLT-SAT
pg. 5

* DRAWINGS ARE NOT TO SCALE

TRACK SYSTEMS & CEILING CONNECTORS

Tracks should be attached securely to structural surfaces only. They are not pre-drilled, but a drill-starter groove is provided.



Ceiling/Floor Track
DG-TRACK-72
Each 72" extruded aluminum track section comes with 4 Track Clips.
pg. 2



Track Clip
DG-TRACK-CLIP
4 clips per track section lock floor and ceiling tensioning components to the track.



Cable Coupler w/ Base Plate
DG-CC-SAT
pgs. 2,3,6,8



Tensioning Gripper w/ Base Plate
DG-TNS-SAT
pgs. 2,3



End Cap
2 per track section



Wall Track
DG-WALL-TRACK-80
Each 80" extruded aluminum track section comes with a paintable white PVC cover and 2 matching end caps. For longer runs of track a continuous cover is available.
pg. 4



Wall Track Tensioning Gripper
DG-TNS-TRACK-SAT
Comes w/ 3" lower connector cable. For 3/64" - 1/16" cable only.
pg. 4



Acoustic Tile Drywall Gripper
DG-12-CPLT-SAT
Connects to ceiling tile or drywall. Excess cable passes through the hollow thread. For 1/32" - 3/64" cable only. Comes w/ toggle nut. Maximum weight 5 lbs.
pg. 6



Twist On T-Bar Clip
DG-Q6-W
Maximum weight 5 lbs. Shown w/ Mini-Gated Hook
pg. 6



Wrap Around T-Bar Clip
DG-BA1
Shown w/ Cable Coupler. Maximum weight 5 lbs., unless wired to structure.
pg. 6

* DRAWINGS ARE NOT TO SCALE

10 Components/Midway

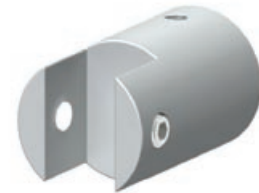
CLAMPS

Side Clamp Grippers lock to shelves/displays and grip the cable. Guide Clamps lock to shelves/displays and slide on the cable. Swiveling Grippers hold material at any angle. When attached to vertical displays, Guide Clamps normally hold the upper end of the material and Clamp Grippers hold the lower end of the material. All clamps come with a short and a long nylon-padded set-screw.

Swiveling Side Clamp Gripper
DG-25-SCU-SAT
For material $\leq 0.375"$ (10mm) thick.
1/16" – 3/32" cable.
pg. 2,3,4



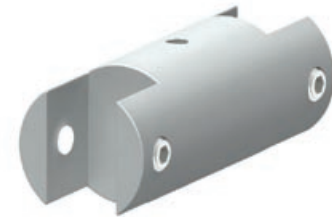
Guide Clamp - Large
DG-GC-SAT
For material $\leq 0.375"$ (10mm) thick.
pg. 2,4



Swiveling Double Side Clamp Gripper
DG-25-SCUX2-SAT
For material $\leq 0.375"$ (10mm) thick.
1/16" – 3/32" cable.
pg. 3,4



Double Guide Clamp - Large
DG-GCX2-SAT
For material $\leq 0.375"$ (10mm) thick.
pg. 4

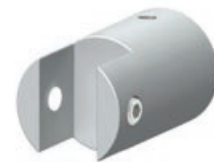


Side Clamp Gripper - Left
DG-15-SCL-SAT
For material $\leq 0.25"$ (7mm) thick.
3/64" – 1/16" cable pg. 5



Side Clamp Gripper - Right
DG-15-SCR-SAT
For material $\leq 0.25"$ (7mm) thick.
3/64" – 1/16" cable pg. 5

Guide Clamp - Small
DG-GCK-SAT
For material $\leq 0.375"$ (10mm) thick.
pg. 5



Double Side Clamp Gripper
DG-15-SCX2-SAT
For material $\leq 0.25"$ (7mm) thick.
3/64" – 1/16" cable
pg. 5



Double Guide Clamp - Small
DG-GCKX2-SAT
For material $\leq 0.25"$ (7mm) thick.
pg. 5



* DRAWINGS ARE NOT TO SCALE

STAND OFF MOUNTS & STAND OFF CLAMPS

Stand Off Mounts are used with glass, acrylic and other heavy or bulky display materials. They come with plastic bushings and 1/4-20 studs in lengths from 0.50" to 1.50" to capture material up to 1.25" thick. Stand Off Clamps work best with light-weight display materials. Guide Clamps normally hold the top of display materials and Clamp Grippers hold the bottom of the material, as shown on page 4.

Top Clamp Gripper
DG-15Z-TC-300-SAT
For material $\leq 0.25"$ (7mm) thick.
3/64" – 1/16" cable
pg. 6



Stand Off Clamp Gripper
DG-25-SLU-SAT
For material $\leq 0.50"$ (14mm) thick.
1/16" – 3/32" cable
pg. 4



Stand Off Clamp Guide
DG-GSLU-SAT
For material $\leq 0.50"$ (14mm) thick.
pg. 4



Double Stand Off Mount Gripper
DG-25-SOMX2-SAT
For material $\leq 1.25"$ (38mm) thick.
1/16" – 3/32" cable
pg. 5



Stand Off Mount Gripper
DG-25-SOM-SAT
For material $\leq 1.25"$ (38mm) thick.
1/16" – 3/32" cable
pg. 4



Stand Off Mount Guide
DG-GSOM-SAT
For material $\leq 1.25"$ (38mm) thick.
pg. 4



* DRAWINGS ARE NOT TO SCALE

12 Components/Midway

FIXED STAND OFFS & CLAMPS

Fixed Stand Off Mount - Small
DG-SO-250-SAT

For material $\leq 0.25"$ (7mm) thick.
Holds material 0.65" from wall surface.

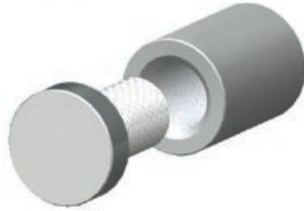
pg. 5



Fixed Stand Off Mount - Medium
DG-SO-500-SAT

For material $\leq 0.50"$ (10mm) thick.
Holds material 1" from wall surface.

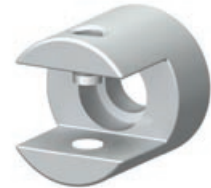
pg. 5



Fixed Wall Clamp
DG-WSC-SAT

The clamp holds shelving material $\leq 0.375"$ (10mm) thick. It must be screwed securely to the structure.

pg. 3



Swiveling Side Mount Gripper
DG-25-SMU-SAT

1/16" - 3/32" cable
p 2,3,6



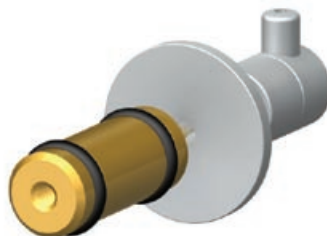
Swiveling Double Side Mount Gripper
DG-25-SMUX2-SAT

For material $\leq 1.25"$ (38mm) thick.
1/16" - 3/32" cable
pg. 2,3



Rod End Mount Gripper
DG-25-ROD-END-SAT

pg. 2



For 1/16" - 3/32" cable. These parts are sold separately or as part of a rod assembly as shown on page 2.

Double Rod End Mount Gripper
DG-25-ROD-ENDX2-SAT

1/16" - 3/32" cable



For 1/16" - 3/32" cable. These parts are sold separately or as part of a rod assembly as shown on page 2.

* DRAWINGS ARE NOT TO SCALE

SHELVING & SIGNAGE

Components on this page are for shelving, signage and decorative support.

Hook Gripper
DG-15-GHA
For 3/64" & 1/16" cable



Reverse Release Support Gripper
DG-12-NT-RR-SAT
1/32" – 3/64" Cable
Supports light-weight decorative fixtures such as glass bubbles. Reverse release allows adjustment from below.



Hanging Coil
DG-HANG-COIL
Hook-supported for ≥ 0.50" foamcore
Maximum weight 2lbs.



Support Gripper w/ Base Plate*
DG-25-SAT
1/16" – 3/32" Cable
pg. 2



Support Gripper w/ Cover Plate*
DG-25-CPLT-SAT
1/16" – 3/32" Cable
pg. 3

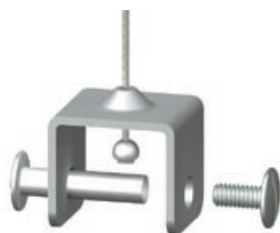


*Plates are detachable

Fixed Clamp - Small
DG-TC-500-SAT
For ≤ 0.50" thick material. Use with
DAS-12-80-XXX cable only. See cable
information on page 14.
pg. 6



Fixed Clamp - Medium
DG-TC-750-SAT
For ≤ 0.750" thick material. Use
with DAS-12-80-XXX cable only. See
cable information on page 14.
pg. 6



Bullet Shaped Support Gripper*
DG-25-BUL-KFB-SAT
1/16" – 3/32" Cable



*Plate is detachable

* DRAWINGS ARE NOT TO SCALE

14 Components/Cables

DISPLAY CABLES

Griplock® Display Cables are made from 7 x 7 medium-to-high tensile strength 304 stainless steel aircraft cable, factory fitted with molded zinc or swaged steel barrels, balls and hook terminals. Aluminum oval sleeves are used for looped cables. Griplock® Terminals are guaranteed to the full published break-weight of the cable, with the exception of the DAS-12-GHKZ zinc Mini Gated Hook which has a maximum allowable weight-load of 25 lbs. Unless otherwise noted, Griplock® Grippers are designed to work with 3/32" (2.5mm) and 5/64" (2.0mm) cables. These grippers will also work with 1/16" (1.6mm) cables, but at reduced weight loads. NOTE: When used in conjunction with the Griplock® gripper mechanism, cables have a break-weight that is less than the actual break-weight of the cable alone. Please study the cable compatibility and weight load chart on page 16. Visit our website or email us for more information.

XXX in the cable part number refers to the length of the cable in inches. Stock cable sizes are: 60", 120", and 180".



Cable
w/ Ball Terminal
DAS-12-80-XXX
3/64" (1.2mm)
Use with Fixed Clamps
as shown on *pg. 13*.



Cable
w/ Barrel Terminal
DAS-16-87-XXX
1/16" (1.6mm)
DAS-20-87-XXX
5/64" (2.0mm)
DAS-25-71-XXX
3/32" (2.5mm)
pgs. 2,3,4,5,6
Other cable
diameters available



Cable
w/ Mini Gated Hook
DAS-12-GHKZ-XXX
3/64" (1.2mm)
Maximum allowable
weight: 25lbs. Use w/
Twist-On T-Bar Clip
shown on page 9 or the
Hanging Coil on page 13.



Cable
w/ Small Gated Hook
DAS-16-GHK-XXX
1/16" (1.6mm)



Cable
w/ Gated Hook
DAS-16-GH-XXX
1/16" (1.6mm)
DAS-20-GH-XXX
5/64" (2.0mm)
DAS-25-GH-XXX
3/32" (2.5mm)

LOOPED CABLES: Use when unistrut or similar structural steel is used as an attachment point.



Cable
w/ Loop End
DAS-12-44-XXX
3/64" (1.2mm)
DAS-16-44-XXX
1/16" (1.6mm)
DAS-20-44-XXX
5/64" (2.0mm)
DAS-25-44-XXX
3/32" (2.5mm)
Other cable diameters
available



Cable
w/ Loop & Thimble
DAS-12-45-XXX
3/64" (1.2mm)
DAS-16-45-XXX
1/16" (1.6mm)
DAS-20-45-XXX
5/64" (2.0mm)
DAS-25-45-XXX
3/32" (2.5mm)
Other cable diameters
available



Cable Finial
DG-CT-SAT
for all cable sizes
pg. 2,6



"The Pushmepullyu"
Quick Loopmaker
DG-15ZZ
Maximum allowable weight:
80lbs w/ 1/16"(1.6mm) cable,
40lbs w/ 3/64"(1.2mm) cable.



Cable Cutter
TL-CUTTER
Approved for aircraft
cable up to 1/8".

* DRAWINGS ARE NOT TO SCALE



16 Data/Weightloads

Instructions for Use

Most grippers and couplers in this catalog are of plated brass and have a satin-chrome finish. Other finishes are available. For detailed line drawings please visit our website or contact us.

When installed correctly, a floor to ceiling system will be supported by the full strength of each weight-bearing cable. In accordance with cable industry standards, Griplock® recommends using no more than 20% of the full strength of each cable as a safe working load. To determine the maximum weight load for a display system, multiply the number of cables by the safe working load for the combination of cable diameter and Griplock® Gripper you are going to use. For example: (1) a sign hung from two 1/16" cables using the DG-15Z-TC-300-SAT (page 11) has a load capacity of 120 lbs (2 x 60 lbs) (2) a shelf suspended on four 2.5mm cables has a safe load capacity of 520 lbs (4 x 130), provided the weight is evenly distributed on the shelf.

For more information on weight loads please see the chart below. You may also visit our website or email us for more information.

		Cable Diameter				
Gripper Part No. Beginning with:		1.32"/0.8 mm	3/64"/1.2mm	1/16"1/6mm	5/64"/2.0mm	3/32"/2.5mm
	DG-12	10	25	Non Compatible	Non Compatible	Non Compatible
	DG-15	Non Compatible	35	60	Non Compatible	Non Compatible
	DG-25	Non Compatible	Non Compatible	40	90	130
	DG-TNS	Non Compatible	Non Compatible	40	90	130
	Cable Only (Without Gripper)	36	50	95	150	200

The information in this chart is not applicable to any other cable gripping product. Use of Griplock® supplied cables is assumed. Figures are in pounds and reflect the cable industry standard 1:5 safety ratio for static loads. Weight load guidelines and other specifications are for illustration purposes only. They should not be construed as a warranty that the product or system will conform. Each purchaser is solely responsible for determining that (1) the product and/or system is suitable for the intended application, and (2) the product and/or system complies with all federal, state and local safety and trade laws and regulations. Installers are cautioned that the integrity of the structures to which these components are attached, and the fasteners used to attach them, are critical to the integrity of the overall system and should therefore be evaluated by a qualified engineer or installer.

IF THIS IS THE FIRST TIME you've worked with Griplock® Display Systems, please read the following information carefully:

- Use only 7x7 or 7x19 uncoated galvanized or stainless steel aircraft cable.
- When feeding cable through a gripper always allow cable to pass 1" beyond the gripper housing. When cutting excess cable always leave 1" of cable showing.
- Cable should be cut using purpose-built cutters, as shown on page 14.
- Cable will generally not fray when cut. In case of fraying apply a drop of super-glue.
- DO NOT ATTEMPT TO RUN AN ELECTRICAL CURRENT THROUGH THESE CABLES. Use a separate power cord.
- Adhere strictly to the weight-load and gripper/cable compatibility guidelines shown above.
- The Griplock® Display System is not recommended for outdoor use. It should not be exposed to wind or water or allowed to oscillate continuously. Avoid placing fixtures in chemical laden environments such as indoor swimming pools. Do not place non-tensioned fixtures close to HVAC vents where they may be exposed to air currents.
- Cables should not enter or exit couplers, grippers or tensioners at more than a 5 degree angle. For angled applications use the jointed grippers and couplers shown on page 8.

PROPRIETARY AND CONFIDENTIAL: The drawings and specifications contained in this publication are the exclusive property of Griplock® Systems, LLC and shall not be divulged, reproduced, copied or used as the basis for the manufacture or sale of apparatus without the express written authorization of Griplock® Systems, LLC.

Installation to Structural Surfaces

The drawings below illustrate common installation scenarios and the parts and fasteners that will best suit them. Note that these systems are only as strong as the structures to which they are attached and the fasteners used to attach them. All Base Plates and Tensioning Base Plates have internal 1/4-20 threads. If you have any questions, please contact us directly or seek the advice of a qualified installer.

Fig. 1

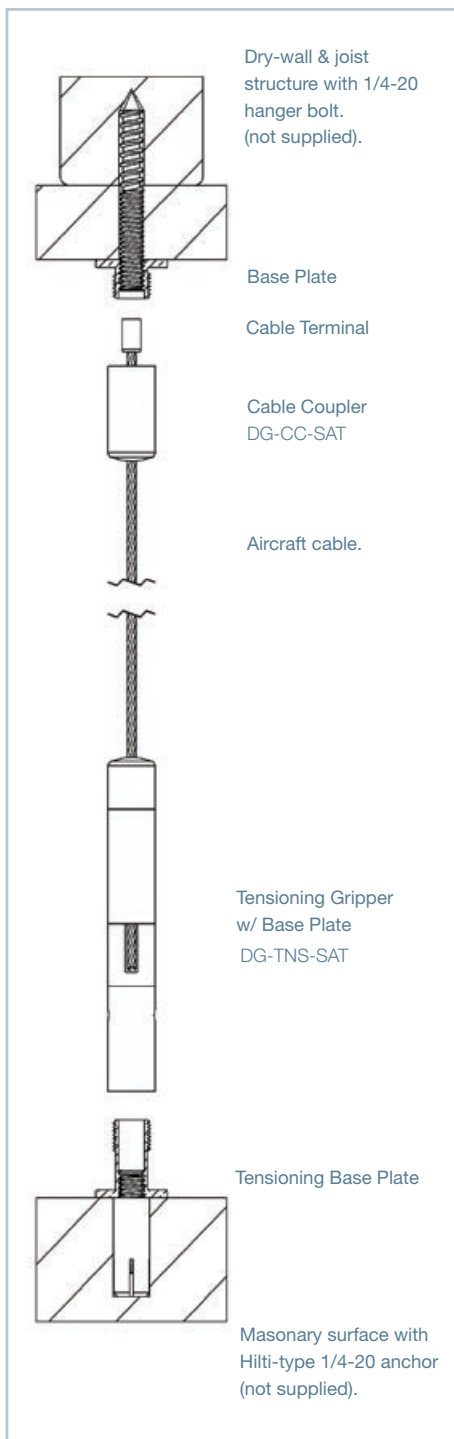


Fig. 2

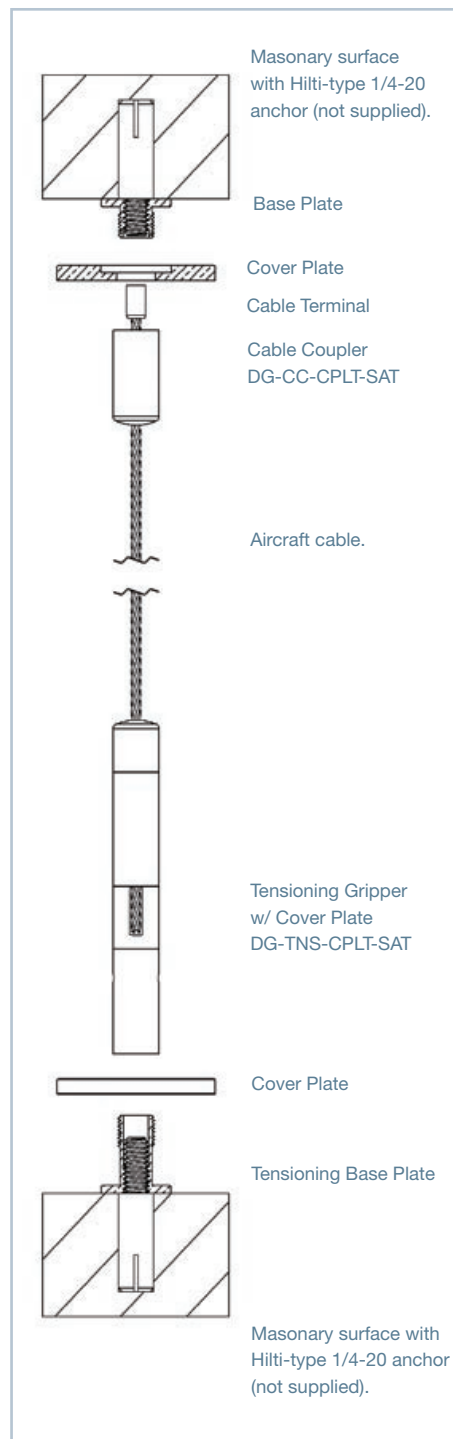
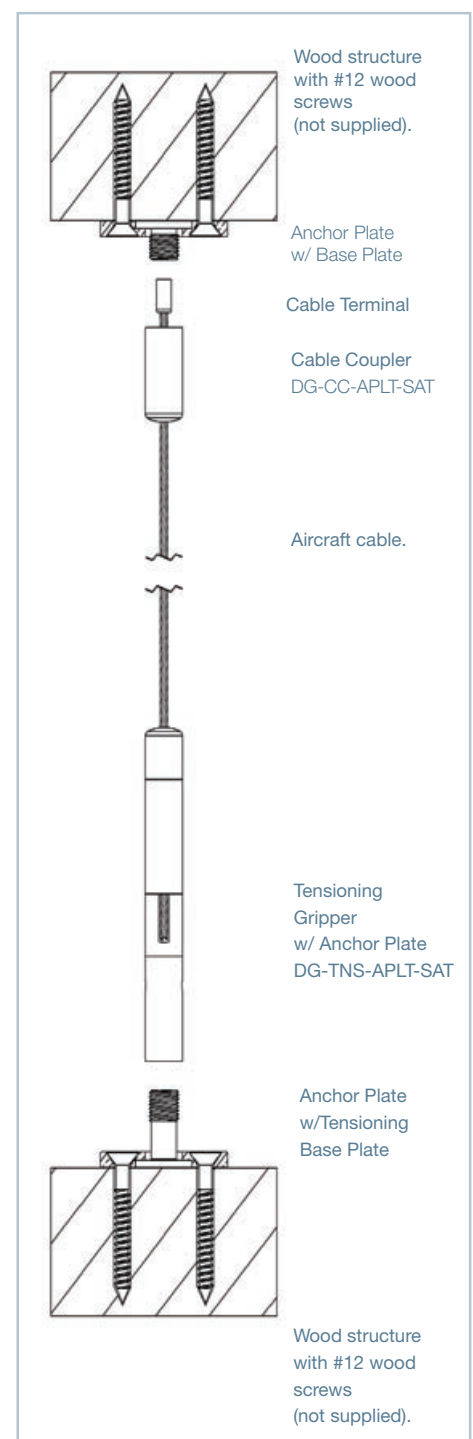





Fig. 3



COMPONENTS/Definitions




- CABLE COUPLER**.....A non-adjustable Griplock® cable connector which attaches the cable to an upper structural surface, generally a wall or ceiling.
- GRIPLOCK® GRIPPER**.....A unique self locking device used to attach shelves, rods, signs, etc., to the cable. Griplock® Grippers can be moved up and down the cable, allowing the fixtures to be adjusted to the desired height.
- MIDWAY COMPONENT**.....A gripper, mount, or clamp used between the ceiling and floor to attach shelves, rods, signs, etc., to the cable.
- TENSIONER**.....An adjustable Griplock® Gripper used specifically at the floor level to connect to and tighten the cable.

COMPONENTS



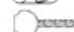









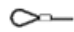
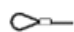

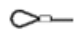



NAME	NUMBER	PAGES
CEILING / TOP COMPONENTS		
 Acoustic Tile/Drywall Gripper	DG-12-CPLT-SAT	6,9
 Cable Coupler w/ Anchor Plate	DG-CC-APLT-SAT	8
 Cable Coupler w/ Base Plate	DG-CC-SAT	2,3,8,9
 Cable Coupler w/ Cover Plate	DG-CC-CPLT-SAT	2,4,5,6,8
 Jointed Coupler w/ Anchor Plate	DG-CC-JU-APLT-SAT	5,8
 Jointed Coupler w/ Base Plate	DG-CC-JU-SAT	8
 Jointed Coupler w/ Cover Plate	DG-CC-JU-CPLT-SAT	6,8,9
 Twist On T-Bar Clip	DG-Q6-W	6,9
 Wrap Around T-Bar Clip	DG-BA1	6,9
FLOOR/BOTTOM COMPONENTS		
 Jointed Tensioning Gripper w/ Anchor Plate	DG-TNS-JU-APLT-SAT	5,8
 Jointed Tensioning Gripper w/ Base Plate	DG-TNS-JU-SAT	8
 Jointed Tensioning Gripper w/ Cover Plate	DG-TNS-JU-CPLT-SAT	5,8
 Tensioning Gripper w/ Anchor Plate	DG-TNS-APLT-SAT	5,8
 Tensioning Gripper w/ Base Plate	DG-TNS-SAT	2,3,8,9
 Tensioning Gripper w/ Cover Plate	DG-TNS-CPLT-SAT	5,8
 Wall Track Tensioning Gripper	DG-TNS-TRACK-SAT	4,9
MIDWAY COMPONENTS		
 Bullet Shaped Support Gripper	DG-25-BUL-KFB-SAT	13
 Double Guide Clamp - Large	DG-GCX2-SAT	4,10
 Double Guide Clamp - Small	DG-GCKX2-SAT	5,10
 Double Rod End Mount Gripper	DG-25-ROD-ENDX2-SAT	12
 Double Side Clamp Gripper	DG-15-SCX2-SAT	5,10
 Double Stand Off Mount Gripper	DG-25-SOMX2-SAT	5,11
 Fixed Clamp - Medium	DG-TC-750-SAT	6,13
 Fixed Clamp - Small	DG-TC-500-SAT	6,13
 Fixed Stand Off Mount - Medium	DG-SO-500-SAT	5,12
 Fixed Stand Off Mount - Small	DG-SO-250-SAT	5,12
 Fixed Wall Clamp	DG-WSC-SAT	3,12

	Garment Rod
	Guide Clamp - Large
	Guide Clamp - Small
	Hanging Coil
	Hook Gripper
	Reverse Release Support Gripper
	Rod End Mount Gripper
	Side Clamp Gripper - Left
	Side Clamp Gripper - Right
	Stand Off Clamp Gripper
	Stand Off Clamp Guide
	Stand Off Mount Gripper
	Stand Off Mount Guide
	Support Gripper w/ Base Plate
	Support Gripper w/ Cover Plate
	Swiveling Double Side Clamp Gripper
	Swiveling Double Side Mount Gripper
	Swiveling Side Clamp Gripper
	Swiveling Side Mount Gripper
	Top Clamp Gripper

TRACK

	Ceiling/Floor Track
	Track Clip
	Wall Track

CABLES

	Cable Cutter
	Cable Finial
	Cable w/ Ball Terminal 3/64" (1.2mm)
	Cable w/ Barrel Terminal 1/16" (1.6mm)
	Cable w/ Barrel Terminal 5/64" (2.0mm)
	Cable w/ Barrel Terminal 3/32" (2.5mm)
	Cable w/ Gated Hook 1/16" (1.6mm)
	Cable w/ Gated Hook 5/64" (2.0mm)
	Cable w/ Gated Hook 3/32" (2.5mm)
	Cable w/ Loop & Thimble 1/16" (1.6mm)
	Cable w/ Loop & Thimble 5/64" (2.0mm)
	Cable w/ Loop & Thimble 3/32" (2.5mm)
	Cable w/ Loop End 3/64" (1.2mm)
	Cable w/ Loop End 1/16" (1.6mm)
	Cable w/ Loop End 5/64" (2.0mm)
	Cable w/ Loop End 3/32" (2.5mm)
	Cable w/ Mini Gated Hook 3/64" (1.2mm)
	Cable w/ Small Gated Hook 1/16" (1.6mm)
	Pushmepullyu

DG-ROD.....	2
DG-GC-SAT	2,4,10
DG-GCK-SAT.....	5,10
DG-HANG-COIL.....	13
DG-15-GHA	13
DG-12-NT-RR-SAT.....	13
DG-25-ROD-END-SAT.....	2,12
DG-15-SCL-SAT.....	5,10
DG-15-SCR-SAT.....	5,10
DG-25-SLU-SAT.....	4,11
DG-GSLU-SAT.....	4,11
DG-25-SOM-SAT.....	4,11
DG-GSOM-SAT.....	4,11
DG-25-SAT.....	2,13
DG-25-CPLT-SAT.....	3,13
DG-25-SCUX2-SAT.....	3,4,10
DG-25-SMUX2-SAT.....	2,3,12
DG-25-SCU-SAT.....	2,3,4,7,10
DG-25-SMU-SAT.....	2,3,6,12
DG-15Z-TC-300-SAT.....	6,11

DG-TRACK-72.....	2,9
DC-TRACK-CLIP.....	9
DG-WALL-TRACK-80.....	4,9

TL-CUTTER.....	14
DG-CT-SAT.....	6,14
DAS-12-80-XXX.....	6,14
DAS-16-87-XXX.....	6,14
DAS-20-87-XXX.....	14
DAS-25-71-XXX.....	3,14
DAS-16-GH-XXX.....	14
DAS-20-GH-XXX.....	14
DAS-25-GH-XXX.....	14
DAS-16-45-XXX.....	14
DAS-20-45-XXX.....	14
DAS-25-45-XXX.....	14
DAS-12-44-XXX.....	14
DAS-16-44-XXX.....	14
DAS-20-44-XXX.....	14
DAS-25-44-XXX.....	14
DAS-12-GHKZ-XXX.....	6,14
DAS-16-GHK-XXX.....	14
DG-15ZZ.....	14

The Art of Suspension

GRIP
LOCK
SYSTEMS™



The Griplock® Display System: Elegant, Flexible and Incredibly Strong.



GRIPLOCK® SYSTEMS, LLC

tel 805.566.0064

fax 805.566.0065

www.griplocksistemas.com

email info@griplocksistemas.com

Photos: Michael Moore; planetmoore.com

Design: Catherine Kanner; kannerbook.com