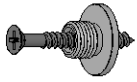


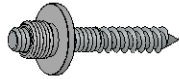
Wall Mounts Installation Guidelines

Wall Stud/
Blocking
Option 1



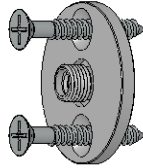
#8 or #10 Wood
Screw

Wall Stud/
Blocking
Option 2



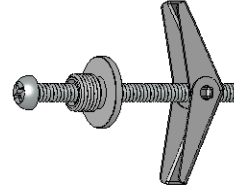
1/4-20 Hanger
Bolt

Wall Stud/
Blocking
Option 3



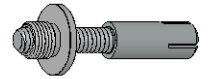
2 - #10 or #12
Wood Screws

Hollow Wall/
Drywall

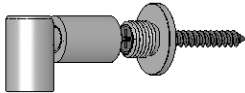


3/16" Toggle Bolt
Molly Bolts as an
Alternative

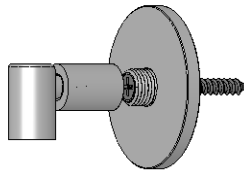
Concrete/
Masonry
Wall



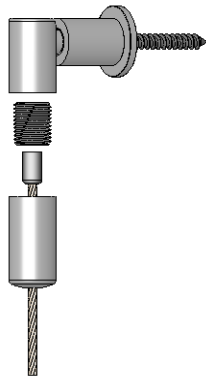
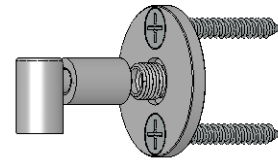
1/4-20 Stud Into
Screw Anchor
Installed in Concrete



1) Mount base plate by one of the above options listed above.



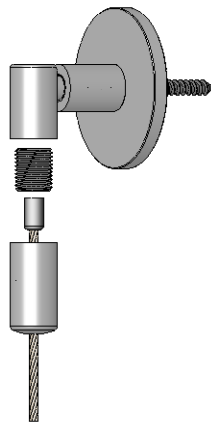
2) Screw universal joint onto base plate. For CPLT version install cover plate before screwing on universal joint.



DG-CC-JU-SAT

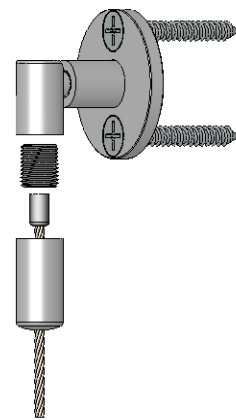
3) Thread open end of cable through coupler body.

4) Screw M10 stud into universal joint.



DG-CC-JU-CPLT-SAT

5) Screw coupler body onto M10 stud.



DG-CC-JU-APLT-SAT

DATE: 10/30/08

SCALE: 1:2

FILE: Wall Mounts Instructions

PROPRIETARY AND CONFIDENTIAL

This drawing and these specifications are the exclusive property of GRIPLOCK SYSTEMS LLC and shall not be divulged, reproduced, copied, or used as the basis for the manufacture or sale of apparatus without the express written authorization of GRIPLOCK SYSTEMS LLC.



GRIPLOCK SYSTEMS

410 Palm Ave. Loft A18, Carpinteria, CA 93013
Phone (805) 566-0064 Fax (805) 566-0065
www.griplocksistemas.com